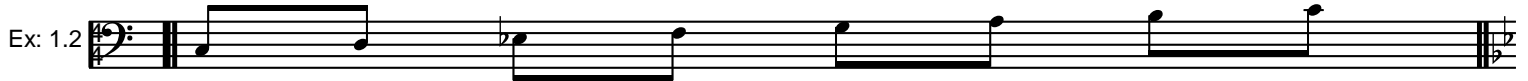


You can also view the 7 modes starting with the same note (tonic) for each mode, in the following examples, the note C.

I recommend, as in example 1.1, to do this exercise in the 12 tonalities.

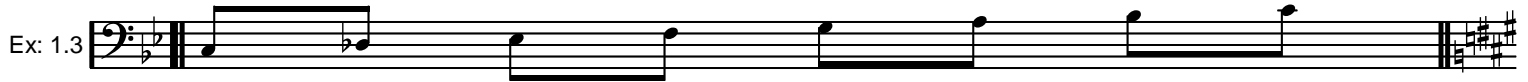
C - Melodic minor

First mode of C Melodic Minor / C melodic minor scale starting on the tonic, C to C



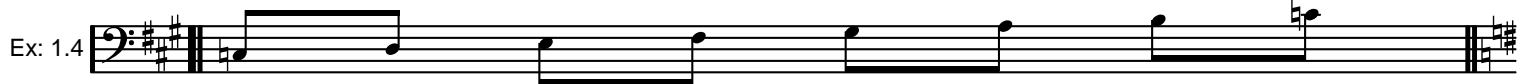
C - Dorian b2

Second mode of Bb Melodic Minor / Bb melodic minor scale (over two octaves) starting on the second, C to C



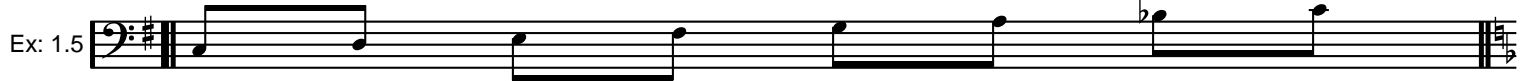
C - Lydian Augmented

Third mode of A Melodic Minor / A melodic minor scale (over two octaves) starting on the third, C to C



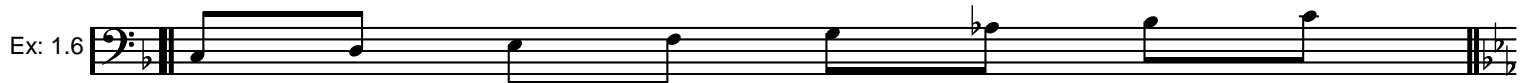
C - Lydian Dominant (Lydian b7)

Fourth mode of G Melodic Minor / G melodic minor scale (over two octaves) starting on the fourth, C to C



C - Mixolydian b6

Fifth mode of F Melodic Minor / F melodic minor scale (over two octaves) starting on the fifth, C to C



C - Locrian 2# (Locrian natural 2)

Sixth mode of Eb Melodic Minor / Eb melodic minor scale (over two octaves) starting on the sixth, C to C



C - Altered (Altered Dominant)

Seventh mode of Db Melodic Minor / Db melodic minor scale (over two octaves) starting on the seventh, C to C

